

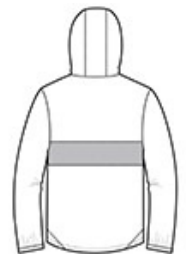


A zippered pocket keeps valuables accessible and secure in this element-beating anorak.

- 100% polyester shell
- 100% polyester mesh body and hood lining
- 100% polyester w oven sleeve lining
- Tag-free label
- Three-panel hood w ith draw cord and toggles
- Angled chin guard for additional comfort
- Exposed molded zipper
- Stretch binding at cuffs
- Left side seam zipper for easy on/off
- Two pockets in one: front pocket includes a top zippered pocket to secure valuables
- Slight drop tail hem
- Draw cord hem w ith toggles



front



back

CARE INSTRUCTIONS

Machine wash cold. Gentle cycle with like colors. Use mild detergent and remove immediately. Do not allow to lay on itself when wet. Do not bleach. Tumble dry low. Cool iron, if needed.

HOW TO MEASURE



CHEST WIDTH

Measure under the arm and around the fullest part of the chest with arms down, keeping tape horizontal.

SIZE CHART

	XS	S	M	L	XL	2XL	3XL	4XL
Chest	32-34	35-37	38-40	41-43	44-46	47-49	50-53	54-57

COLOR INFORMATION



Black/ Black
PMS BLACK C



Black/ True Red
PMS 200C



Black/ True Royal
PMS 7686C



Graphite/ Black
PMS 432C



True Navy/ White
PMS 533C